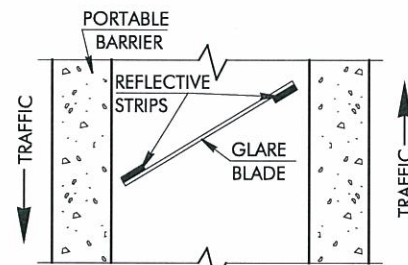
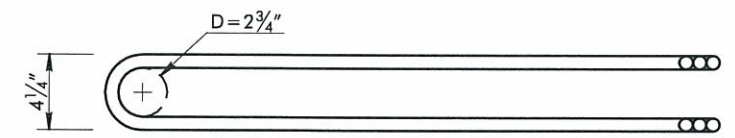
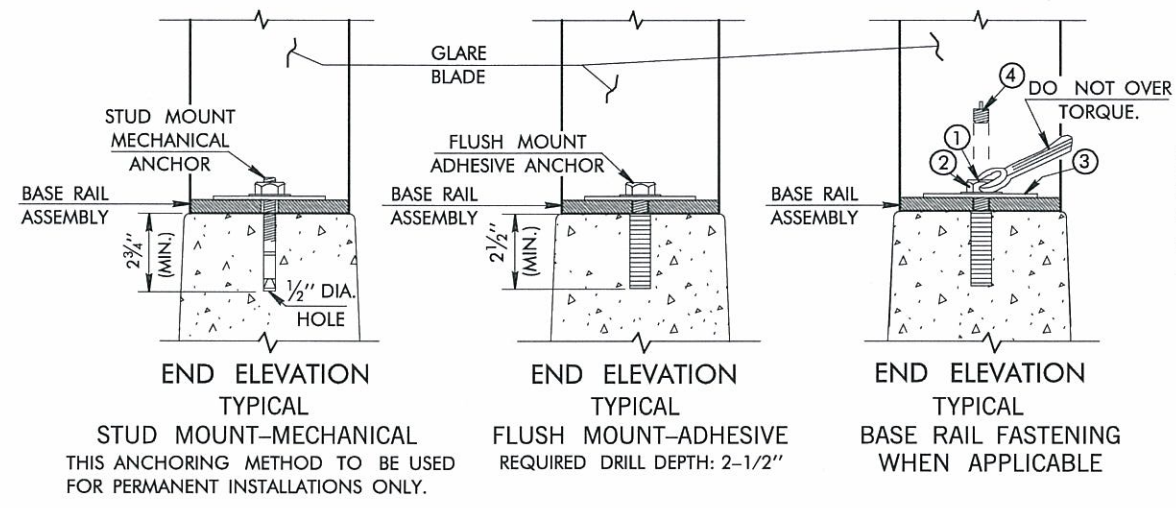


DESCRIPTION	REVISIONS	DATE



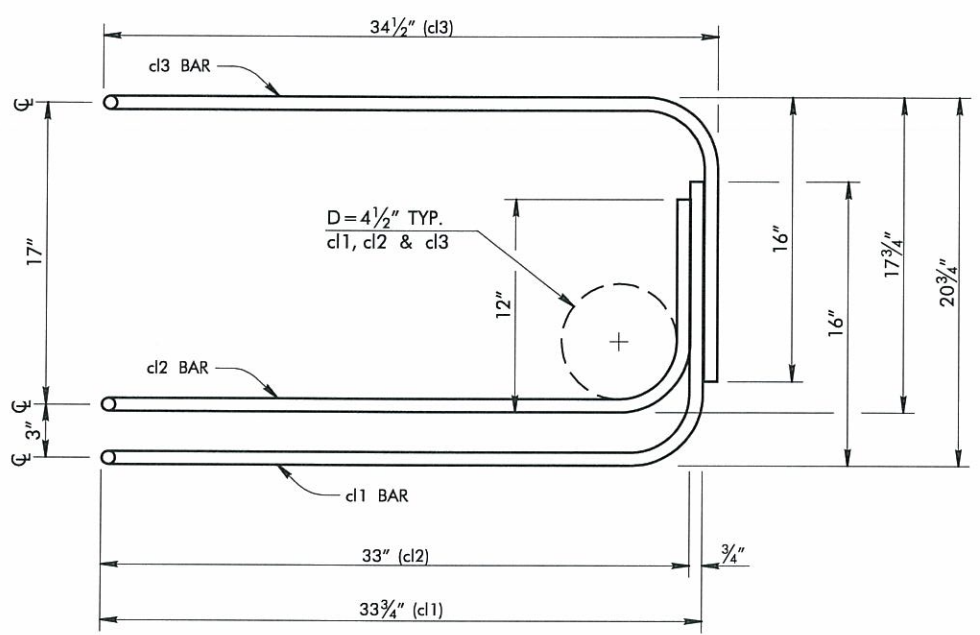
SEC. A-A



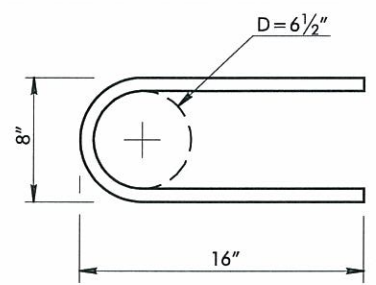
TYPICAL BASE RAIL ANCHORING METHODS  
 REQUIRED DRILL BIT: 1/2" DIAMETER CARBIDE TIP - MASONARY  
 REQUIRED DRILL DEPTH: 2 1/2" (MIN.) - 2 3/4" (MAX.)

PLACE 4" WASHERS (3) OVER MOUNTING HOLES & INSERT 1/2" x 1 1/2" BOLT (1) WITH 1/2" LOCK WASHER (2) AND TIGHTEN DOWN & TORQUE TO 20 - 25 FT. LBS.

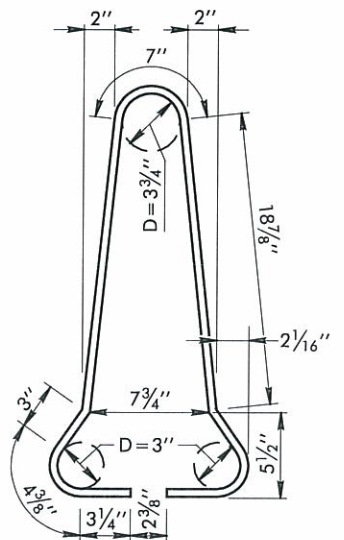
AFTER REMOVAL OF BASE RAIL ASSEMBLY, PLUG (4) SHALL BE RE-INSERTED TO PROTECT HOLE FROM THE ELEMENTS.



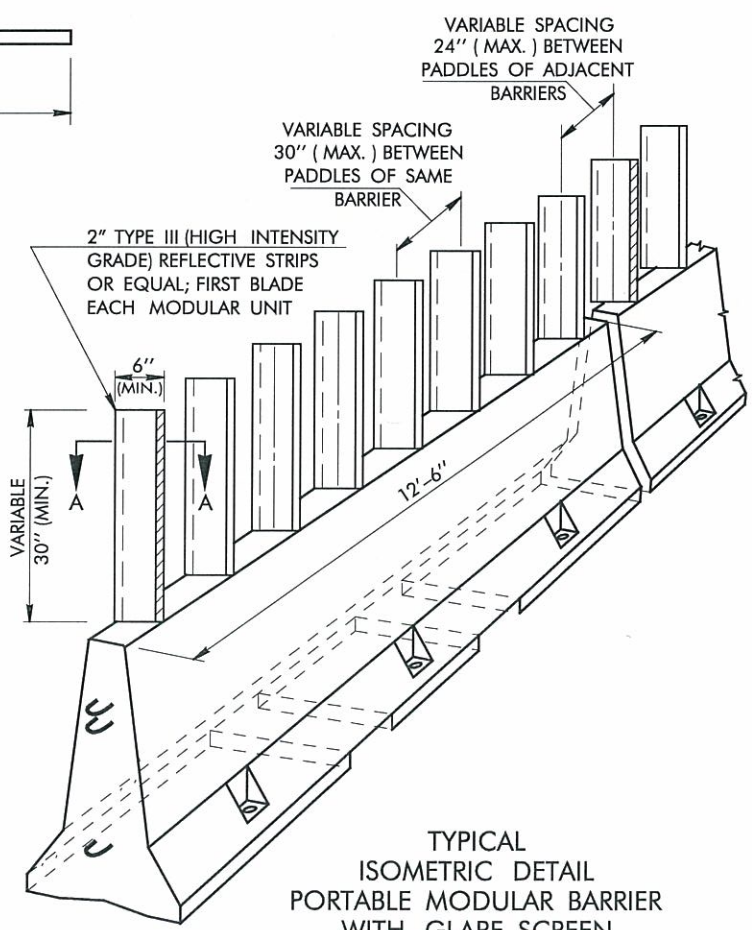
CONNECTION LOOP BAR ASSEMBLY



a2 STIRRUP BAR



a1 STIRRUP BAR  
 LENGTHS MEASURED ALONG OUTSIDE OF HOOPS.



TYPICAL ISOMETRIC DETAIL PORTABLE MODULAR BARRIER WITH GLARE SCREEN

- GENERAL NOTES
- ALL CONSTRUCTION AND MATERIAL REQUIREMENTS SHALL BE IN ACCORDANCE WITH THE 2009 OKLAHOMA STANDARD SPECIFICATIONS AND APPLICABLE SPECIAL PROVISIONS.
  - ALL REINFORCEMENT SHALL BE DEFORMED GRADE 60, AASHTO M 31, EXCEPT FOR THE CONNECTION LOOP BAR ASSEMBLY SHALL BE SMOOTH #6 BARS WITH A MINIMUM YIELD STRENGTH OF 60 KSI, A MINIMUM TENSILE STRENGTH OF 80 KSI, AND PASSING A 180 DEGREE BEND TEST USING A 2 3/4" PIN BEND DIAMETER. THE LOOPS SHALL BE INSTALLED WITHIN 1/8" OF THE PLAN DIMENSIONS.
  - THE CONTRACTOR SHALL FURNISH AND INSTALL SUCH LIGHTS, SIGNS, BARRICADES AND FLAGMEN THAT MAY BE NECESSARY FOR THE CONTROL, SAFETY AND MAINTENANCE OF TRAFFIC WHEN INITIALLY INSTALLING OR RELOCATING PRECAST CONCRETE MEDIAN BARRIER.
  - GLARE SCREEN SYSTEMS SHALL BE INSTALLED AS PER MANUFACTURERS SPECIFICATIONS AND UNIQUE INSTALLATION INSTRUCTIONS OR DETAILS NOT SHOWN ON THIS STANDARD SHALL BE PROVIDED TO AND APPROVED BY THE ENGINEER.

SCHEDULE OF REINFORCING BARS PER 12'-6" BARRIER SECTION					
BAR	BAR SIZE	SHAPE	NO. of BARS	LENGTH FT.	WEIGHT LBS.
a1	4	U	11	5'-6"	40.4
a2	6	U	6	3'-1"	27.8
b1	5	—	3	12'-2"	38.1
c1	4	—	2	12'-2"	16.3
d1	6	—	2	8'-0"	24.1
d2	6	—	2	7'-7"	22.8
d3	6	—	2	8'-2"	24.6
TOTAL					194.1

NOTE: LENGTHS MEASURED ALONG OUTSIDE OF HOOP.

BASIS OF PAYMENT		
ITEM NO.	ITEM	UNIT
877(A)	PORTABLE LONGITUDINAL BARRIER	LF
878(A)	MODULAR GLARE SCREEN (PERMANENT)	EA OR LF
878(B)	MODULAR GLARE SCREEN (TEMPORARY)	SD

THIS STANDARD SHALL BE USED IN CONJUNCTION WITH TCS24-1.

APPROVED BY  
 TRAFFIC ENGINEER *David Smalley* DATE: 6/23/10

TRAFFIC STANDARD  
 TRAFFIC CONTROL STANDARD  
 PORTABLE LONGITUDINAL BARRIER  
 REINFORCING/CONNECTION STEEL  
 AND GLARE SCREEN

2009 SPECIFICATIONS (NCHRP 350 F-SHAPE) TCS25-1 00  
 T-525

TRFPC36 M: 2009 Standards TC1525.dgn 8:30:15 AM 6/2/2010 d:\usr2\hib\eroyh.pen R:\TRAF PLOT\bw.tbl